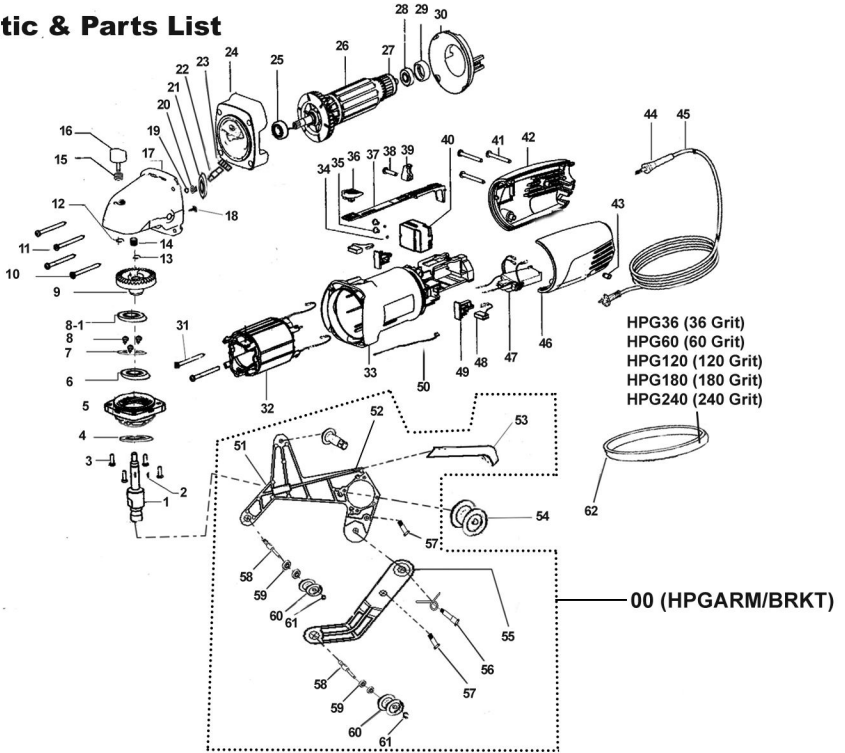


Schematic & Parts List



S.No.	Description	Qty.	S.No.	Description	Qty.
1	Output Shaft	1	32	Stator	1
2	Woodruff Key	1	33	Housing	1
3	Front Cap Screw	3	34	Flat Washer	1
4	Dust Cap	4	35	Tapping Screw	1
5	Front Cover	1	36	Switch Push Button	1
6	Bearing	1	37	Switch push Lever	1
7	Gland	1	38	Tension Disc Screw	2
8	Gland Screw	1	39	Cable Disc	1
8-1	Flat Washer	3	40	Switch	1
9	Gear (big)	1	41	Tapping Screw	3
10	Set Screw	1	42	Rear Cover	1
11	Set Screw	1	43	Screw	1
12	Clamp Spring for Self-Locking	4	44	Cable Sleeve	1
13	Clamp Spring for Output Shaft	1	45	Cable	1
14	Roller Pin	1	46	Rear Cover	1
15	Self-Locking Spring	1	47	Speed-Control Switch	1
16	Self-Locking	1	48	Carbon Brush	1
17	Gear Cap	1	49	Carbon Brush Holder	1
18	Bearing Set Screw	1	50	Earth Wire	1
19	Clamp Spring	1	54	Belt Main Wheel	1
20	Gear (Small)	1	62	Belt (36, 60, 120, 180, 240 Grit)	1
21	Bearing	1	00	Arm Bracket	1
22	Gear Case Spindle	1	51	Aluminum Upper Spider	1
23	Spur Gear (Small)	1	52	Handle	1
24	Bearing Retainer	1	53	Belts Cover	1
25	Bearing	1	55	Aluminum Lower Spider	1
26	Rotor	1	56	Spider Set Screw with Spring	1
27	Rotor Axis	1	57	Screw	2
28	Bearing	1	58	Spindle	3
29	Bearing Housing	1	59	Bearing	2
30	Windshield	1	60	Plastic Wheel	4
31	Self-Tapping Screw	2	61	Clamp Spring	2